

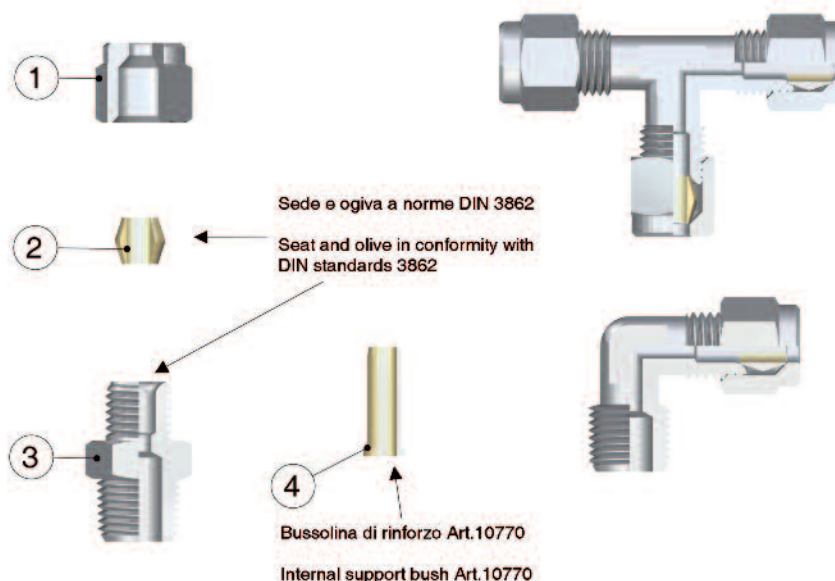


Serie/Series

**10000**

**RACCORDI UNIVERSALI A BICONO**  
*UNIVERSAL DOUBLE CONE FITTINGS*

## Caratteristiche Tecniche | Technical Characteristics



### Scheda Materiali | Specifications

- |                                      |                                   |
|--------------------------------------|-----------------------------------|
| 1 Dado in Ottone Nichelato           | 1 Nickel-plated Brass Nut         |
| 2 Ogiva in Ottone (PTFE a richiesta) | 2 Brass Olive (If requested PTFE) |
| 3 Corpo in Ottone Nichelato          | 3 Nickel-plated Brass Body        |
| 4 Bussolina di rinforzo              | 4 Internal support bush           |

### Temperature e Pressioni | Temperatures and Pressures

Pressioni e temperature vengono determinate dal tipo di tubo impiegato, pertanto tali valori sono da definirsi in base alle caratteristiche del tubo stesso. Riportiamo di seguito i valori delle pressioni massime consigliate per l'utilizzo dei raccordi con tubi di rame dallo spessore di 1 mm a 20° C.

*The working pressures and working temperatures depend on which type of tube is used, for this reason, the values must be determined in accordance with the tube's features.*

*Hereunder, we specify the values of the maximum pressure advised for the fittings at a temperature of 20° C connected with copper tube, which has a thickness of 1 mm.*

I valori delle pressioni consigliate, riportate in tabella, sono stati ottenuti dai valori di prova adottando un Coefficiente di Sicurezza 4. Sono disponibili i certificati delle prove rilasciati dai vari laboratori che le hanno eseguite.

*The values of working pressures advised, specified in table have been obtained from the test values using a Safety Factor 4. It is available the test report made by the external laboratory test.*

MISURA SIZE	PRESSIONE MASSIMA CONSIGLIATA MAXIMUM PRESSURE ADVISED
Ø 4	150 kg/cmq. - 148.4 Bar
Ø 6	150 kg/cmq. - 148.4 Bar
Ø 8	130 kg/cmq. - 128.6 Bar
Ø 10	180 kg/cmq. - 178.1 Bar
Ø 12	150 kg/cmq. - 148.4 Bar
Ø 14	115 kg/cmq. - 113.3 Bar
Ø 16	75 kg/cmq. - 74.2 Bar
Ø 18	60 kg/cmq. - 59.4 Bar
Ø 22	40 kg/cmq. - 39.6 Bar

### Filettature | Threads

Gas conica conforme ISO 7.1, BS 21, DIN 2999 / Tapered gas in conformity with ISO 7.1, BS 21, DIN 2999.

Gas cilindrica conforme ISO 228 / Parallel gas in conformity with ISO 228.

Metrica conforme ISO R/262 / Metric in conformity with ISO R/262.

### Tubi di collegamento | Connection Tubes

Tubi in rame, ferro, acciaio, alluminio, ottone, ecc.  
Con apposito rinforzo interno (art.10770), possono essere utilizzati anche tubi in PA11, PA6, ecc.

*Tubes made in copper, steel, iron, aluminium, brass, etc.*

*With an inside support bush (art. 10770), can be used also for plastic material such as PA11, PA6. etc.*

### Fluidi compatibili | Fluids

Acqua, olio, aria compressa, fluidi in genere per l'impiantistica idraulica, oleodinamica, idropneumatica, ecc.

*Water, oils, compressed air, fluids in general for the hydraulic, pneumatic and oildynamic plants etc.*

## Istruzioni di Montaggio / Assembling Instruction

## Serie / Series 9000 - 10000 - 13000

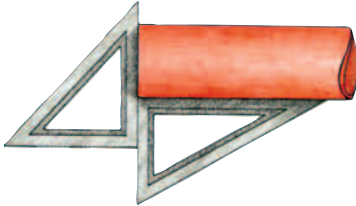
Per garantire le migliori prestazioni dei nostri raccordi, riportiamo una sequenza di operazioni da eseguire durante il montaggio, che contribuiranno ad eliminare sprechi di tempo e cattive applicazioni del prodotto.

To ensure the best function of our fittings, please follow the under mentioned instructions, in order to avoid waste of time and bad applications of the product.

1

Tagliare il tubo a 90° togliendo le bave interne ed esterne.

*Cut the tube at 90° and remove internal and external burrs.*



2

Oliare le filettature del dado e del corpo del raccordo, compresa l'ogiva. Quindi infilare sul tubo dado e ogiva, facendo attenzione che quest'ultima abbia la parte tagliente verso il raccordo.

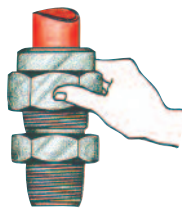
*Lightly oil the tube nut, olive and fitting thread. Slide the nut and olive onto the tube ensuring that the sharp side of the olive is facing the fitting.*



3

Avvitare manualmente il dado fino ad ottenere una certa resistenza dell'ogiva.

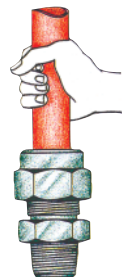
*Screw the nut onto the fitting by hand until hand-tight.*



4

Verificare la completa adesione del tubo al corpo, forzando il medesimo verso l'interno del raccordo e quindi, con la chiave, bloccare il tubo.

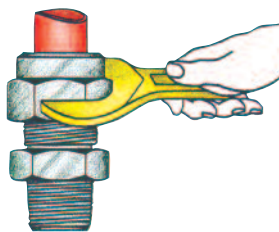
*Ensure the tube is pushed fully home into the fitting before tightening the nut with the correct spanner.*



5

Stringere il dado (1 giro e 1/4 o 1/2) ponendo, se necessario, dei punti di riferimento.

*Tighten the nut with the spanner one and a quarter turns, marking reference points, if necessary.*



6

A garanzia che l'ogiva abbia inciso il tubo svitare il dado e controllare l'uniformità del solco.

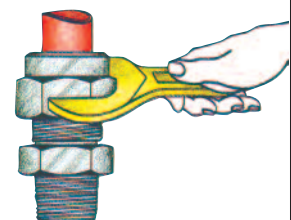
*To ensure that the olive has gripped the tube correctly. Unscrew the nut and make sure that the groove made by the olive is even.*



7

Riserrare il dado per circa 1/4 di giro. Altra avvertenza per un buon montaggio: nel caso di tubi curvi, in prossimità del raccordo, il tubo stesso dovrà avere una distanza rettilinea almeno pari al doppio dell'altezza del dado.

*Tighten the nut again with an extra quarter turn. Additional information to ensure correct assembly. Where fitting to curved tubes ensure that the section entering the fitting is straight for a minimum length of twice the nut height.*



## COME ORDINARE

I raccordi standard della Serie 10000 prevedono:

- Ogiva in ottone

Per formulare un ordine é sufficiente specificare **ARTICOLO, MISURA, QUANTITA'**.

Ogni variazione allo standard deve essere specificata sull'ordine mediante una descrizione (es. Ogiva in PTFE).

## HOW TO ORDER

The standard items of the 10000 series are supplied with:

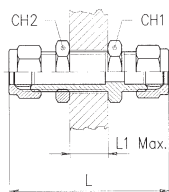
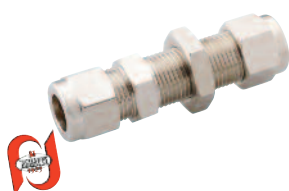
- Brass olive

To order simply specify the **ARTICLE CODE, SIZE and QUANTITY**.

Every kind of changes must be specified on the order using a description (ex. PTFE olive).

# 10465

RACCORDO INTERMEDIO DI ATTRAVERSAMENTO - BULKHEAD CONNECTOR



Tube/Tube	L	L1MAX	CH1	CH2	Conf. Pack.
4	46.5	15	10	13	25
6	51.5	15	14	14	25
8	53	15	14	17	25
10	61.5	16	19	21	25
12	67.5	20	22	24	25
14	72	20	24	24	25

1 0 4 6 5

CODICE ARTICOLO  
ARTICLE CODE

10

MISURA  
SIZE

NICHELATURA  
NICKEL-PLATED

Ogiva PTFE  
PTFE Olive

TIPO OGIVA  
TYPE OF OLIVE

Ogiva OTTONE  
BRASS Olive



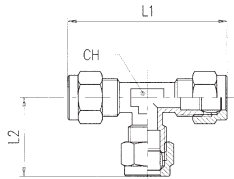
Su richiesta / if required

Ogiva PTFE  
PTFE Olive



# 10200

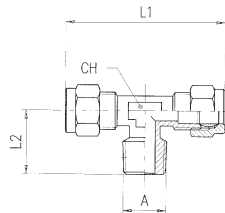
RACCORDO A T INTERMEDIO - TEE CONNECTOR



Tubo/Tube	L1	L2	CH	Conf. Pack.
4	41	20,5	8	25
6	46	23	9	25
8	53	26,5	12	25
10	62	31	13	25
12	67	33,5	14	25
14	72	36	18	10
15	78	39	18	10
16	78	39	17	10
18	83	41,5	20	10
22	86	43	27	10

# 10220

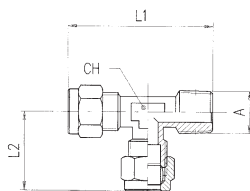
RACCORDO A T MASCHIO CENTRALE - TEE MALE ADAPTOR CENTRE LEG



Tubo/Tube	A	L1	L2	CH	Conf. Pack.
4	- 1/8	41	15	8	50
6	- 1/8	46	16,5	9	25
6	- 1/4	46	20,5	9	25
8	- 1/8	53	16,5	12	25
8	- 1/4	53	20,5	12	25
8	- 3/8	57	23	13	25
10	- 1/4	62	22,5	13	25
10	- 3/8	62	23,5	13	25
10	- 1/2	64	27	14	25
12	- 1/4	66	24,5	14	25
12	- 3/8	66	25	14	25
12	- 1/2	67	26,5	14	25
14	- 3/8	75	26	16	10
14	- 1/2	78	31	18	10
15	- 1/2	80	31	18	10
16	- 1/2	79	29	17	10
18	- 1/2	84	29,5	20	10
18	- 3/4	82	32,5	20	10
22	- 3/4	86	34	27	10

# 10230

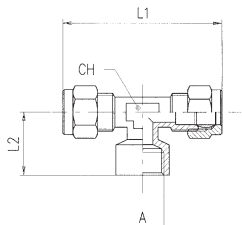
RACCORDO A T MASCHIO LATERALE - TEE MALE ADAPTOR OFF SET LEG



Tubo/Tube	A	L1	L2	CH	Conf. Pack.
4	- 1/8	35	21	8	50
6	- 1/8	39	24	9	25
6	- 1/4	43	23	9	25
8	- 1/8	43	26	12	25
8	- 1/4	46	26	12	25
8	- 3/8	49	26	13	25
10	- 1/4	55	31	13	25
10	- 3/8	54	31	13	25
12	- 3/8	58	33	14	25
12	- 1/2	59	34	15	25
14	- 1/2	67	39	18	25

# 10240

RACCORDO A T FEMMINA CENTRALE - TEE FEMALE CENTRE LEG

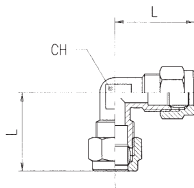


Tube/Tube	A	L1	L2	CH	Conf. Pack.
4	- 1/8	42	18	8	50
6	- 1/8	46.5	19.5	9	25
6	- 1/4	54	24.5	13	25
8	- 1/8	53	19.5	12	25
8	- 1/4	55	24.5	13	25
10	- 1/4	63	24.5	13	25
10	- 3/8	65	26	14	25
10	- 1/2	66	26	15	25
12	- 1/4	66	25.5	14	25
12	- 3/8	66	26	14	25
12	- 1/2	66	26	15	25
14	- 1/2	67	30	18	10
15	- 1/2	77	30	18	10
16	- 1/2	77	28.5	17	10
18	- 1/2	84	28	20	10
18	- 3/4	83	34	20	10



# 10260

RACCORDO A L INTERMEDIO - ELBOW CONNECTOR

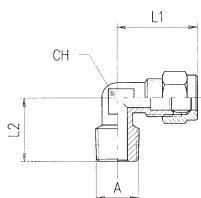


Tube/Tube	L	CH	Conf. Pack.
4	20	8	50
6	24	9	50
8	28	11	25
10	32	13	25
12	34	14	25
14	36.5	17	25
15	38	17	25
16	39	17	10
18	41.5	20	10
22	43	27	10



# 10280

RACCORDO A L MASCHIO - ELBOW MALE ADAPTOR

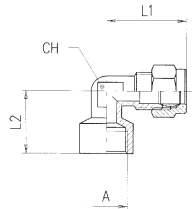


Tube/Tube	A	L1	L2	CH	Conf. Pack.
4	- 1/8	20.5	15	8	50
6	- 1/8	23.5	17	9	50
6	- 1/4	23.5	19	9	50
8	- 1/8	28	18	11	50
8	- 1/4	28	21.5	11	25
8	- 3/8	28.5	24	13	25
10	- 1/4	32	23.5	13	25
10	- 3/8	32	24.5	13	25
10	- 1/2	34	25	14	25
12	- 1/4	34	24	14	25
12	- 3/8	34	26	14	25
12	- 1/2	34	25	14	25
14	- 3/8	38	26	17	25
14	- 1/2	38	28.5	17	25
15	- 1/2	39	28.5	17	25
16	- 1/2	40	28	17	10
18	- 1/2	42	29.5	20	10
18	- 3/4	42	32	20	10
22	- 3/4	42.5	34	27	10



# 10290

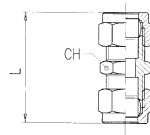
RACCORDO A L FEMMINA - ELBOW FEMALE ADAPTOR



Tubo/Tube	A	L1	L2	CH	Conf. Pack.
4	- 1/8	22	18	8	50
6	- 1/8	23.5	18	9	50
6	- 1/4	24	22.5	11	50
8	- 1/8	28	21	11	50
8	- 1/4	28.5	25.5	13	50
8	- 3/8	29	25	14	25
10	- 1/4	34	25	13	25
10	- 3/8	33	25	14	25
10	- 1/2	33	27	15	25
12	- 1/4	34	26	14	25
12	- 3/8	34	26	14	25
12	- 1/2	33	27	15	25
14	- 1/2	38.5	30	18	25
15	- 1/2	39	30	18	25
16	- 1/2	40	30	18	25
18	- 1/2	42	29	20	10
18	- 3/4	42	33.5	20	10

# 10460

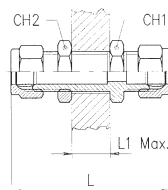
RACCORDO DIRITTO INTERMEDIO - STRAIGHT CONNECTOR



Tubo/Tube	L	CH	Conf. Pack.
4	30.5	10	50
6	35	11	50
8	36	13	50
10	43.5	16	25
12	44	18	25
14	47	21	25
15	52	21	25
16	52.5	22	25
18	56.5	26	10
22	55	30	10

# 10465

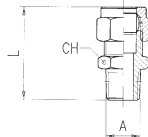
RACCORDO INTERMEDIO DI ATTRAVERSAMENTO - BULKHEAD CONNECTOR



Tubo/Tube	L	L1Max	CH1	CH2	Conf. Pack.
4	46.5	15	10	13	25
6	51.5	15	14	14	25
8	53	15	14	17	25
10	61.5	16	19	21	25
12	67.5	20	22	24	25
14	72	20	24	24	25

# 10480

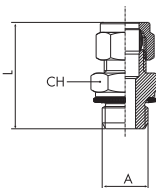
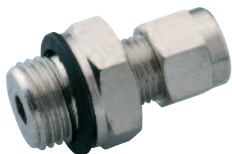
RACCORDO DIRITTO MASCHIO CONICO - STRAIGHT MALE ADAPTOR (TAPER)



Tubo/Tube	A	L	CH	Conf. Pack.
4 - 1/8	25.5	11		50
4 - 1/4	28.5	14		50
6 - 1/8	27.5	11		50
6 - 1/4	31	14		50
6 - 3/8	31.5	17		50
8 - 1/8	28	13		50
8 - 1/4	31.5	14		25
8 - 3/8	32	17		25
10 - 1/4	35	16		25
10 - 3/8	35.5	17		25
10 - 1/2	37	21		25
12 - 1/4	36	18		25
12 - 3/8	37	18		25
12 - 1/2	37	21		25
14 - 3/8	37	20		25
14 - 1/2	39.5	21		25
15 - 1/2	40	21		25
16 - 1/2	42.5	22		10
16 - 3/4	44	27		10
18 - 1/2	44	24		10
18 - 3/4	45.5	27		10
22 - 1/2	44	30		10
22 - 3/4	45.5	30		10

# 10485

RACCORDO DIRITTO MASCHIO CILINDRICO - STRAIGHT MALE ADAPTOR (PARALLEL)

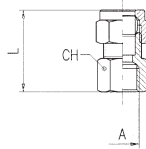


Tubo/Tube	A	L	CH	Conf. Pack.
4 - 1/8	25	13		25
6 - 1/8	26.5	13		25
6 - 1/4	30	17		25
8 - 1/8	28.5	13		25
8 - 1/4	31	17		25
8 - 3/8	34.5	22		25
10 - 1/4	34.5	17		25
10 - 3/8	38	22		25
14 - 3/8	39.5	22		25
14 - 1/2	42	27		25
22 - 3/4	47	32		10
22 - 1"	50	40		10



# 10500

RACCORDO DIRITTO FEMMINA - STRAIGHT FEMALE ADAPTOR

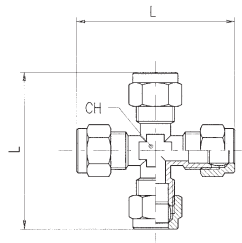


Tubo/Tube	A	L	CH	Conf. Pack.
4	- 1/8	24	14	50
4	- 1/4	26.5	17	50
6	- 1/8	25.5	14	50
6	- 1/4	28	17	50
8	- 1/8	26	14	50
8	- 1/4	28.5	17	50
8	- 3/8	29.5	20	25
10	- 1/4	32	17	25
10	- 3/8	32.5	20	25
10	- 1/2	34.5	24	25
12	- 1/4	32	18	25
12	- 3/8	32.5	20	25
12	- 1/2	34.5	24	25
14	- 3/8	34	20	25
14	- 1/2	36.5	24	25
15	- 1/2	36.5	24	25
16	- 1/2	39	24	10
16	- 3/4	40.5	30	10
18	- 1/2	40	24	10
18	- 3/4	41	30	10
22	- 3/4	40	30	10



# 10510

RACCORDO A CROCE - EQUAL CROSS

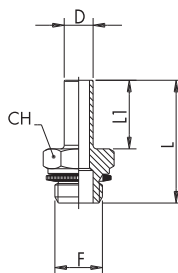


Tubo/Tube	L	CH	Conf. Pack.
4	45	8	25
6	47	9	25
8	54	11	25
10	64	13	25
12	70	17	25
14	74.5	17	10



# 13530

ADATTATORE ORIENTABILE MASCHIO CILINDRICO - ORIENTING MALE ADAPTOR PARALLEL

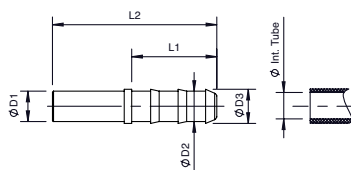


D	F	L	L1	CH	Conf. Pack.
6	- 1/8	27.5	16	13	50
6	- 1/4	31	16	17	50
8	- 1/8	31.5	19	13	25
8	- 1/4	34	19	17	25
8	- 3/8	38	19	22	25
10	- 1/4	35	20	17	25
10	- 3/8	39	20	22	25
14	- 3/8	40	21	22	25
14	- 1/2	42	21	27	25



# 13540

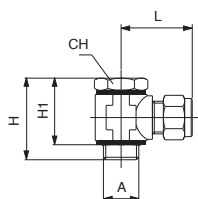
MANICOTTO PORTAGOMMA PER TUBO CAUCCIÙ - SLEEVE HOSE ADAPTER FOR CAOUTCHOU C TUBES



D1	D2	L1	L	Conf. Pack.
6	- 7	22.5	40.5	50
8	- 7	22.5	43.5	50
8	- 10	22.5	43.5	50
10	- 7	22.5	44.5	25
10	- 10	22.5	44.5	25
12	- 10	22.5	45	25
12	- 13	29.5	52	25
14	- 13	29.5	52.5	25

# 10550

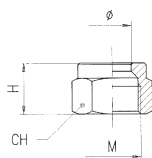
RACCORDO ORIENTABILE A L CON VITE - SINGLE BANJO BODY WITH STEM



Tubo/Tube	A	L	H	H1	CH	Conf. Pack.
4	- 1/8	21.5	31	23	14	25
6	- 1/8	23	31	23	14	25
6	- 1/4	26	32	23.5	17	25
8	- 1/8	26.5	31	23	14	25
8	- 1/4	27	32	23.5	17	25
8	- 3/8	28	36	26.5	19	25
10	- 1/4	31.5	32	23.5	17	25
10	- 3/8	32.5	36	26.5	19	25
14	- 1/4	36.5	44	36.5	17	25
14	- 3/8	36.5	46	37	22	25
14	- 1/2	36.5	49	38	24	10
22	- 3/4	45.5	64	52	32	10

# 10680

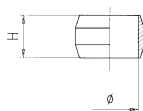
DADO - NUT



Tubo/Tube	H	CH	M	Conf. Pack.
4	9.5	10	M8x1	50
6	10.5	12	M10x1	50
8	11.5	14	M12x1	50
10	13.5	19	M16x1.5	50
12	13.5	21	M18x1.5	50
14	14.5	23	M20x1.5	25
15	16	23	M20x1.5	25
16	17	25	M22x1.5	25
18	18	28	M24x1.5	25
22	18	34	M30x1.5	10

# 10740

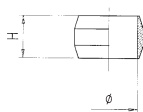
OGIVA OTTONE - BRASS OLIVE



Tubo/Tube	H	Conf. Pack.
4	5.5	50
6	6.5	50
8	6.5	50
10	7.5	50
12	8	50
14	8.5	25
15	9	25
16	9.5	25
18	10	25
22	10	10

# 10760

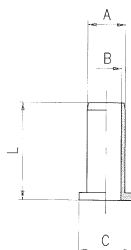
OGIVA PTFE - PTFE OLIVE



Tubo/Tube	H	Conf. Pack.
4	5.5	50
6	6.5	50
8	6.5	50
10	7.5	50
12	8	50
14	8.5	50
15	9	50
16	9.5	50
18	10	50
22	10	50

# 10770

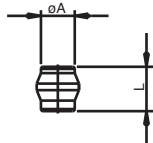
BUSSOLA DI RINFORZO - INTERNAL SUPPORT BUSH



Tubo/Tube	A	B	C	L	Conf. Pack.
4/2.7	2.7	1.5	3.8	13	50
6/4	4	3	5	13	50
8/6	6	5	7	16.5	50
10/8	8	7	9	17	50
12/9	9	8	11	19	50
12/10	10	9	11	19	50
14/12	12	11	13.5	21	50
15/12.5	12.5	11.5	14	21	50
16/13	13	12	15	22	50
18/15	15	14	17.5	23	50
18/16	16	15	17.5	23	50
22/18	18	16.5	19	25	50

# 13780

TAPPO PER RACCORDI UNIVERSALI - PLUG FOR UNIVERSAL FITTINGS



A	L	Conf. Pack.
<b>4</b>	10	50
<b>6</b>	10.5	50
<b>8</b>	10.5	50
<b>10</b>	11.5	50
<b>12</b>	12	50
<b>14</b>	14	25
<b>15</b>	14	25
<b>16</b>	14	25
<b>18</b>	16	25
<b>22</b>	15	25

